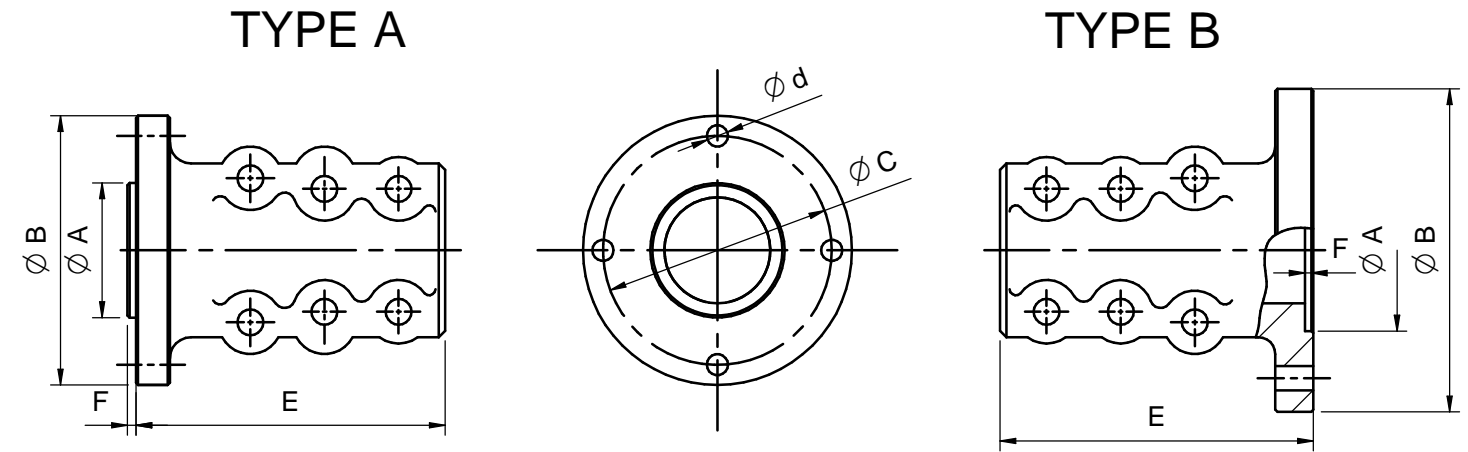


**TABLA DE DIMENSIONES Y REFERENCIAS**  
**TABLE OF DIMENSIONS AND PART NUMBERS**

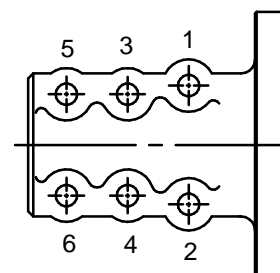
Ø	Tipo Type	Ø A	Ø B	Ø C	Ø d	E	F	Inversor Gearbox	Tipo Type	Ref.
19	A	33	62	50	3xØ8.5	64	3	Solé Diesel	Ronim III	40019107
22	A	63.5	102	82.5	4xØ10.5	81	2	Solé Diesel	Ronim-V, SMI-R, SMI-R2, SMI-R3	40022106
								PRM	PRM-120/150, Delta	
								ZF-HURTH	HBW35/40/50/100/125/250 HBW150-A/V	
								Technodrive	TMC40-TMC60	
								Kanzaki	TTMC35P-TTMC35A2	
22	A	65	93	77	2xØ10.5	63	2	Covach	AS-16	40022107
22	A	50	102	78	4xØ10.5	96	3	Yanmar	Refs. 40025010 + 40022106	40022109*
25	A	33	62	50	3xØ8.5	64	3	Solé Diesel	Ronim III	40025107
25	A	50	100	78	4xØ10.5	82	3	Yanmar	KM2-P, M3-P, KBW-10E, KM3A	40025109
25	B	60	102	80	4xØ10.5	83	4	Volvo	MS-2A, MS-2A-L	40025108
25	A	63.5	102	82.5	4xØ10.5	81	2	Solé Diesel	Ronim-V, SMI-R, SMI-R2, SMI-R3	40025106
								PRM	PRM-120/150, Delta	
								ZF-HURTH	HBW35/40/50/100/125/250 HBW150-A/V	
								Technodrive	TMC40-TMC60	
								Kanzaki	TTMC35P-TTMC35A2	
25	A	65	93	77	2xØ10	63	2	Covach	AS-16	40025117
30	A	50	100	78	4xØ10.5	105	2	Yanmar	KM2-P, M3-P, KBW-10E, KM3A	40030109
30	B	60	102	80	4xØ10.5	106	4	Volvo	MS-2A, MS-2A-L, MS-25-L, MS-25-A	40030107
30	A	63.5	102	82.5	4xØ10.5	104	2	Solé Diesel	Ronim-V, SMI-R, SMI-R2, SMI-R3	40030106
								PRM	PRM-120/150, Delta	
								ZF-HURTH	HBW35/40/50/100/125/250 HBW150-A/V, HSW250A	
								Technodrive	TMC40-TMC60	
								Kanzaki	TTMC35P-TTMC35A2	
30	A	65	120	100	4xØ10.5	105	2	Yanmar	KBW-20/21, KM-4A, KMH4A	40030112
30	A	63.5	127	108	4xØ11.5	105	2	Volvo	MS-4, HS-1, HS-1A	40030108
								PRM	PRM-160/260	
								ZF-HURTH	HBW360H, HSW450A/V, HSW630A/H/V	
								Technodrive	TM345A/545A/93/93A/170/170A	
								Borg Warner	BW-71/72C VDrive	
35	B	60	102	80	4xØ10.5	107	5	Volvo	MS-2A, MS-2A-L, MS-25-L, MS-25-A	40035111
35	A	63.5	102	82.5	4xØ10.5	105	2	Solé Diesel	Ronim-V, SMI-R, SMI-R2, SMI-R3	40035107
								PRM	PRM-120/150	
								ZF-HURTH	HBW35/40/50/100/125/250 HBW150-A/V	
								Technodrive	TMC40-TMC60	
								Kanzaki	TTMC35P-TTMC35A2	
35	A	65	120	100	4xØ10.5	105	4	Yanmar	KBW-20/21, KM-4A, KMH4A	40035108
35	A	63.5	127	108	4xØ11.5	105	4	Volvo	MS-4, MS-45A, HS-1, HS-25A	40035106
								PRM	PRM-160/260	
								ZF-HURTH	HBW360H, HSW450A/V, HSW630A/H/V	
								Technodrive	TM345A/545A/93/93A/170/170A	
								Borg Warner	BW-71/72C VDrive	
35	A	63.5	130	108	4xØ12.5	105	4	Yanmar	K-45A	40035109



Ø	Tipo Type	Ø A	Ø B	Ø C	Ø d	E	F	Inversor Gearbox	Tipo Type	Ref.
40	A	63.5	102	82.5	4xM10	126	4	Solé Diesel	SMI-R, SMI-R2, SMI-R3	40040107
40	A	63.5	127	108	4xØ11.5	126	4	Volvo	MS-4, HS-45A, HS-1, HS63AE, HS-25A	40040106
								PRM	PRM-160/260	
								ZF-HURTH	HBW360H, HSW450A/V, HSW630A/H/V	
								Technodrive	TM345A/545A/93/93A/170/170A	
								Borg Warner	BW-71/72C VDrive	
40	A	63.5	130	108	4xØ12.5	126	4	Yanmar	K-45A	40040108
45	A	63.5	127	108	4xØ11.5	140	4	Volvo	MS-4, HS-1, HS63AE, HS-25A	40045108
								PRM	PRM-160/260	
								ZF-HURTH	HBW360H, HSW450A/V, HSW630A/H/V	
								Technodrive	TM345A/545A/93/93A/170/170A	
								Borg Warner	BW-71/72C VDrive	
								Yanmar	KMH50A	
45	A	76.2	152.4	120.7	6xØ13	140	4	PRM	PRM-302/402/601/750/1000	40045107
45	B		146		6xØ17	141	4	Technodrive	TM265/265A	40045109
50	B	63.5	121	98.4	6xM12	148	4	ZF	IRM-220/220A	40050110
50	A		127	108	4xM12	146	4	Technodrive	TM170/170A	40050109
								Borg Warner	BW-71/72C VDrive	
50	A	76.2	152.4	120.7	6xØ13	146	4	PRM	PRM-302/402/601/750/1000	40050107
50	B	76.2	146	120.7	6xØ17	148	4	Technodrive	TM265/265A	40050108
								ZF	ZF-280/280A	

\* Platina eje + Cala / Clamp-on coupling+ Spacer

**INSTRUCCIONES DE MONTAJE**  
**ASSEMBLY INSTRUCTIONS**



Par de apriete/ Torque

Rosca Screw	Calidad Quality	Par Torque
M8	12.9	4kg x m
M10	8.8	5kg x m
M10	8.8	5kg x m
M10	12.9	8.3kg x m
M12	12.9	14.5kg x m
M12	12.9	14.5kg x m
M12	12.9	14.5kg x m

PLATINAS EJE				
CLAMP-ON COUPLINGS				
MATERIAL	ACABADO	TRATAMIENTO	PRESENTACION	ESCALA
DIBUJADO XAVIER	VERIFICADO S.SUBACH	GRADO PRECISIÓN	FECHA CREACIÓN 11/03/2013	ÚLTIMA REVISIÓN
		<b>SOLÉ, S.A.</b>	<b>1720</b>	